



Craftsy

Modern Pointed-Pen Calligraphy

with Laura Lavender

Tools & Materials

Basic Beginner Materials

- Plastic oblique pen holder
You may wish to try a plastic straight pen holder, some calligraphers prefer this for pointed pen. The Speedball company makes both. Go with a fancier turned wood holder if you wish!
- Pointed Pen Nib
Hunt #56, Nikko G, Hunt #101, Gillott #404.
- Higgins Eternal Black Ink
- Smooth white drawing paper
Look for bristol paper, bond paper, or Strathmore lined writing pad.

Laura's Tools & Materials

- Turned wood pen holder
- Moon Palace sumi ink
- JNB Practice Pad, 8.5" x 11" 24 lb bond paper
- Niko G "comic" pen nib
- Strathmore writing pad with lines
- Clear dappen dish for decanting ink

Other Items Shown in Video Lessons

- Higgins Eternal black ink
- Plastic oblique pen holder
- Plastic and wood straight pen holders
- Strathmore writing envelopes
- Nibs shown:
 - Brause 66EF
 - Rose, Steno
 - Gillott 170, 290, 291, 303, 404, 659, 1068A, 1950
 - Hiro Crown. 111, 40 (Blue pumpkin), 700
 - Hunt 22B, 56, 99, 100, 101, 103, 108
 - Mitchell Elbow
 - Nikko G
 - Zebra G, Tachikawa G
 - Leonardt G, Shakespeare, Index, and Principal EF

Exemplars

Minuscules

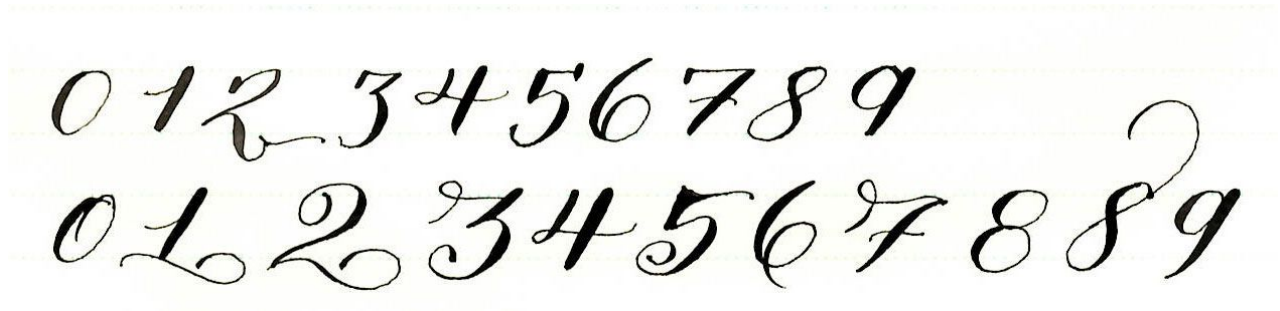
a o e c d g q
h l k b
f p j
u v w x y z m n
r r
i t

Majuscules

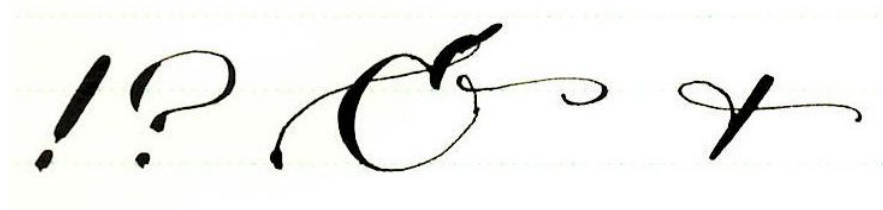
A B C D E F G
H I J K L M N
O P Q R S T
U V W X Y
Z

Exemplars

Numbers

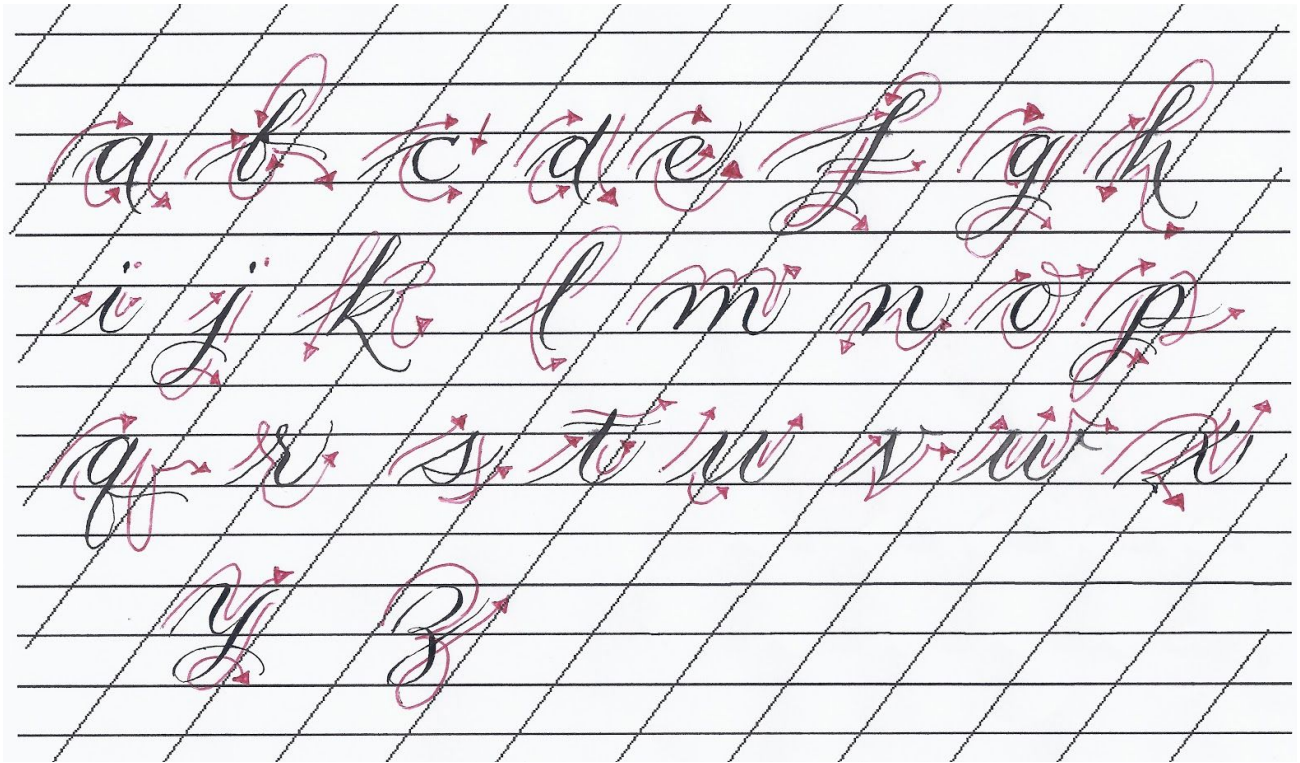


Symbols



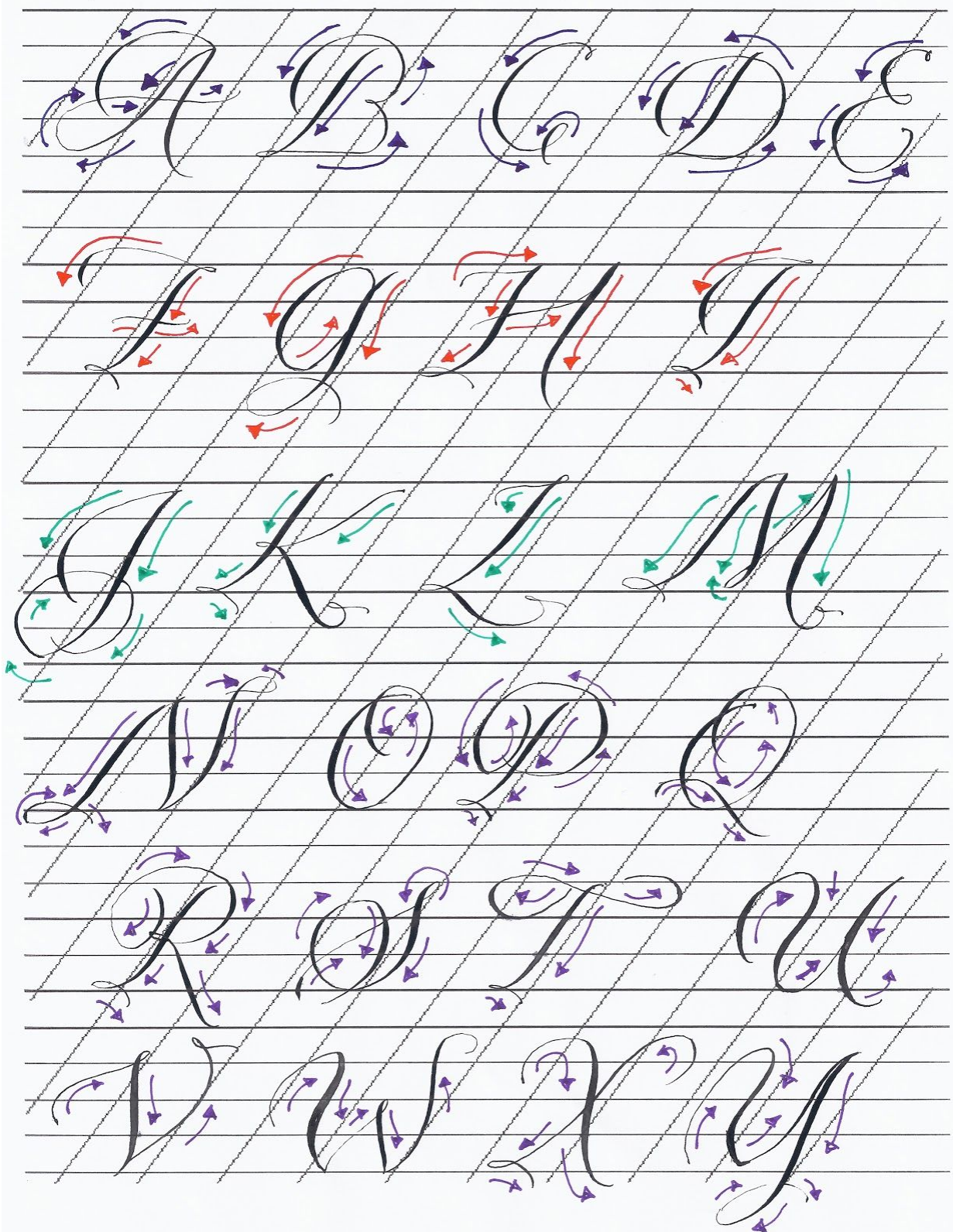
Ductus

Minuscule Ductus



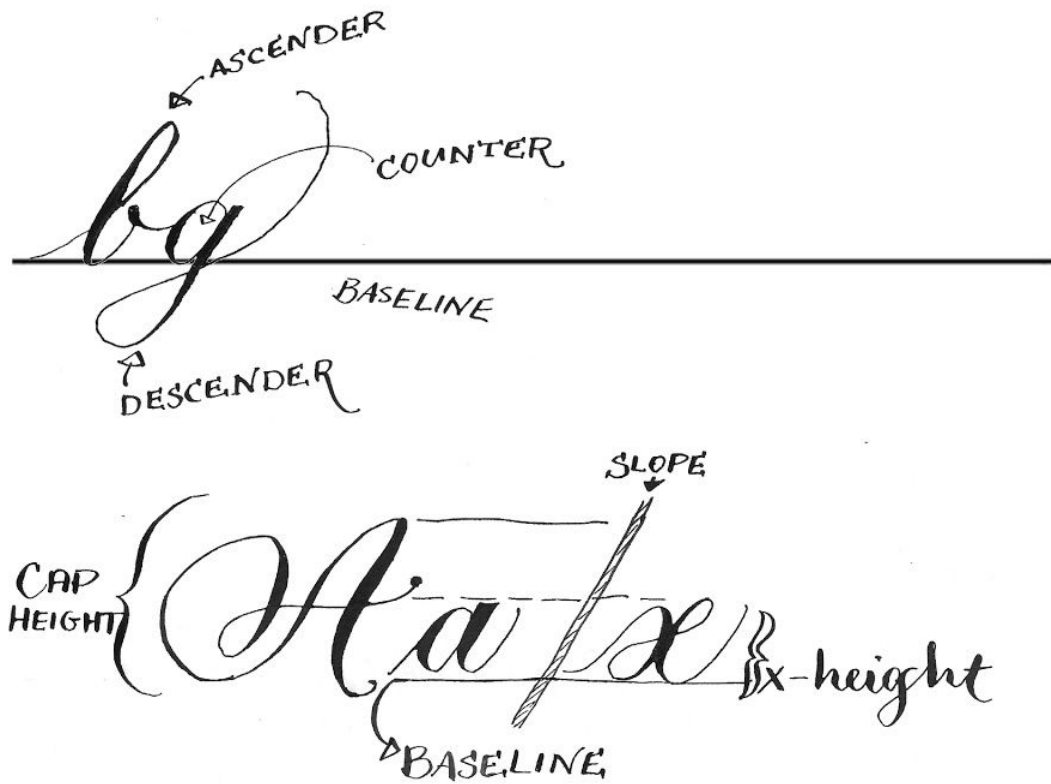
Ductus

Majuscule Ductus

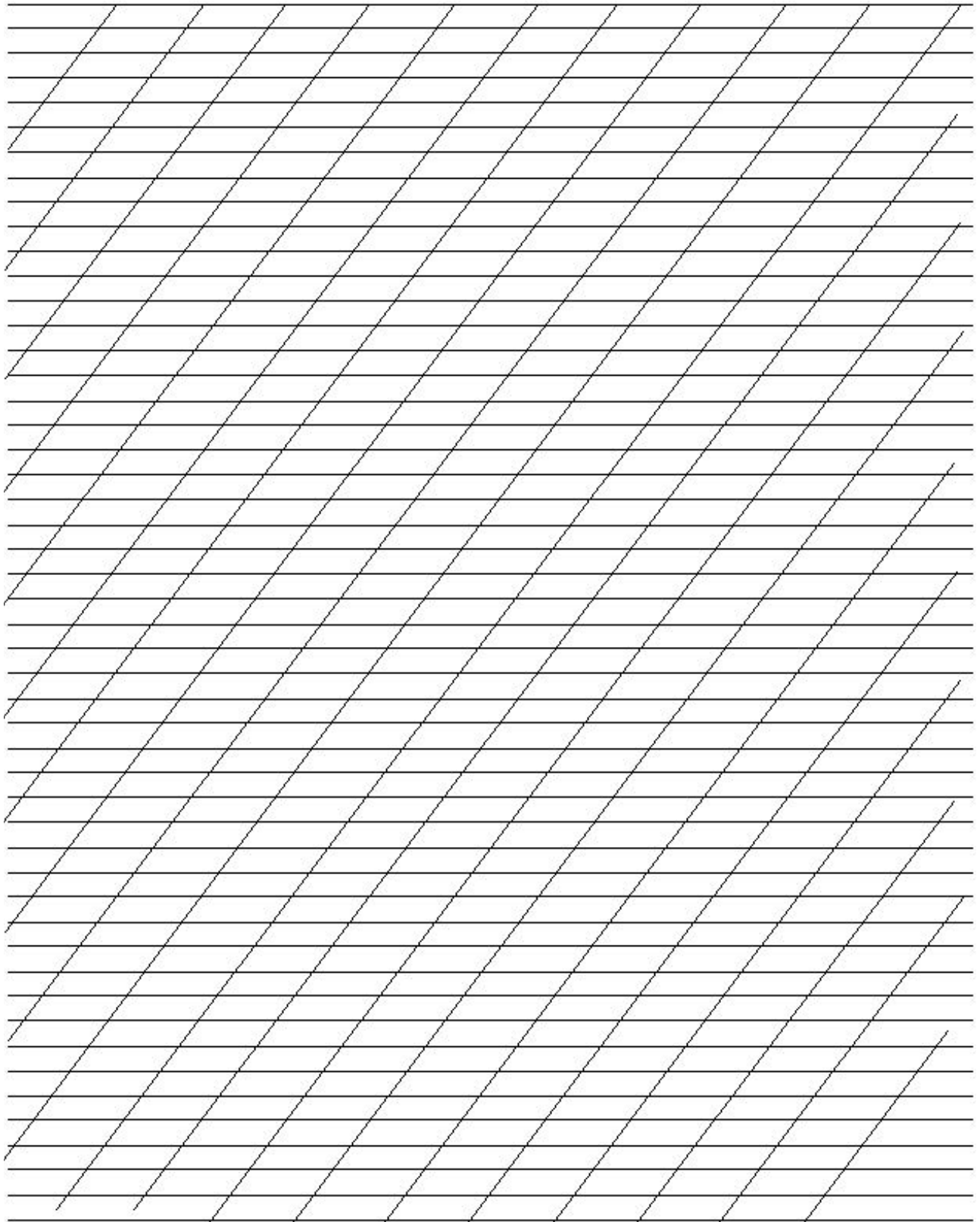


Reference

Anatomy



Slope Line Template



Spacing Guide



Stroke Dictionary

Essential Strokes

①

②

③

④

⑤

⑥

⑦

⑧

⑨

⑩

⑪

⑫

⑬

⑭

⑮

⑯

⑰

⑱

⑲

⑳

㉑

Tips for Left-Handed Calligraphy

- Try a variety of paper positions: Adjust your paper so that you can easily maintain the correct pen angle/ slope, even though you may not be able to easily see your lettering. Try having the paper at a 90-degree angle.
- Position paper farther away from your body, not directly under your chin.
- Use an oblique pen holder. Adjust the nib in the holder so the nib is at the correct position for you. Aim for both tines of the nib to be squarely on the paper.
- Try different hand and arm positions.
- Make sure you use a guard sheet under your hand so your letters do not get smudged.
- Try a different order of strokes.
- If you are feeling discouraged, give the pointed pen a break and try practicing your calligraphy with a ballpoint pen, pencil or a thin marker. These tools will let you practice letter shape and try out hand, arm and paper positions without the added worry of smudges and splatters from the pointed pen.
- Broad-edged nibs come in 'left-handed' style (with an angled cut nib), but not pointed pen nibs.
- See johnnealbooks.com for left-handed calligraphy tools and books.
- Some left-handed calligraphers use a "bridge," almost like a tiny table to rest their hand on while they write. This avoids smudges.

Books on Left-Handed Calligraphy

- *Insights into Left-Handed Calligraphy* by Betsy Rivers (Teagle & Little, 1991)
- *Left-Handed Calligraphy* by Vance Studley (Dover, 1991)
- *Basics of Left-Handed Calligraphy* by Margaret Shepherd (Prentice Hall, 1988)

